

Potted Inserts

CM1835 INSERT, BLIND, FLOATING NUT

Available in:



Cross Reference

Clarendon Made	NAS Standards	SFS	The Young Engineers	Shur Lok
CM1835	NAS1835	EF1835	TYE1835	SL606

Table 1

Code	Thread	Ø A	C	L	Tab
08	.1640-32 UNJC - 3B	0.685	0.16	0.37	T7
3	.1900-32 UNJF - 3B			0.43	
4	.2500-28 UNJF - 3B	0.748	0.18	0.56	T9
5	.3125-24 UNJF - 3B	0.810	0.20	0.75	T10
6	.3750-24 UNJF - 3B	0.873	0.22	0.81	T11

Dimension in INCH

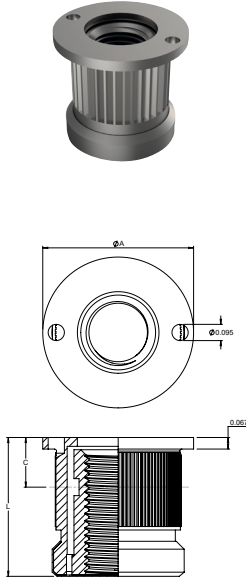


Table 2

Code	Material	Finish
-	CARBON STEEL EN 1.0726 (NUT & BODY)	CADMIUM PLATE AMS-QQ-P-416, TYPE II, CLASS 2
C	STAINLESS STEEL EN 1.4305 (NUT & BODY)	PASSIVATE PER AMS2700, METHOD 1, TYPE 2, CLASS 4
A	ALUMINIUM 3.1354 T351 (BODY)	ANODISE PER MIL-A-8625 TYPE I, CLASS 1
	CARBON STEEL EN 1.0726 (NUT)	CADMIUM PLATE PER AMS-QQ-P-416, TYPE II, CLASS 2

Table 3

Code	Special Finish (Stainless Steel Only)
P	CADMIUM PLATE AMS-QQ-P-416, TYPE II, CLASS 2 (NUT ONLY)
S	SILVER PLATE AMS2410 (NUT ONLY)

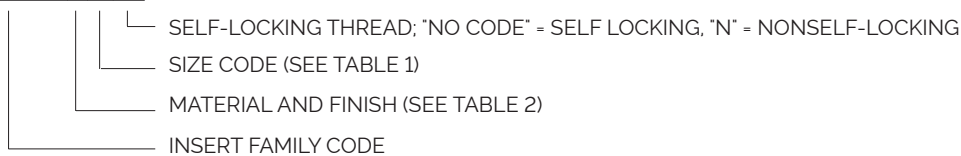
Table 4

Code	Solid Film Lubricant (Internal Threads Only)
M	MOLYKOTE PER AS5272, TYPE 1

PART NUMBER CALL OUT

NAS1835

CM1835 - 4 N



PART NUMBER CALL OUT: CM1835-CARBON STEEL-CADMIUM PLATE-.3750-24-NONSELF-LOCKING

